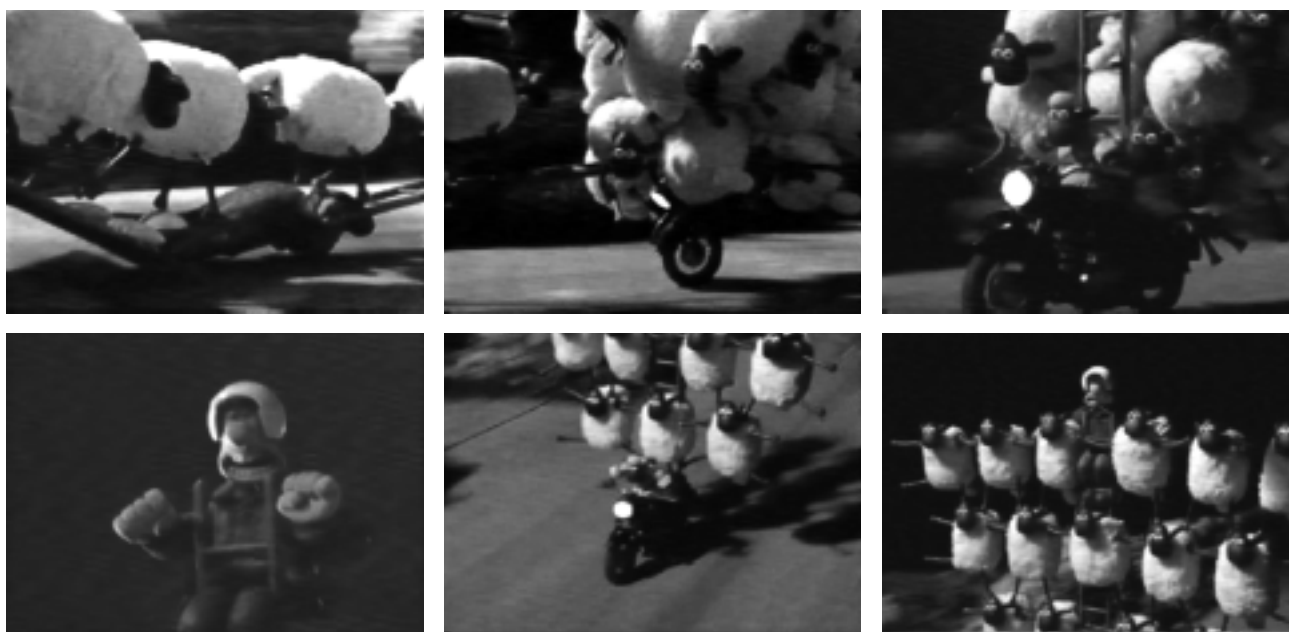


## What's so funny? – Sheep circus

The *Wallace and Gromit* plasticine animation films deal with the adventures of hobby inventor Wallace and his faithful dog and partner Gromit. Although the latter cannot talk he has human abilities and more than once proves to save the day. The extraordinary duo encounters many critical situations – but they always find an ingenious way out.

In one scene of the film *A Close Shave* Wallace is rescuing his sheep friends from the lorry of their kidnapper. He follows the lorry with his motorbike and manages to open the back door, and the sheep walk across his body onto a ladder which is fastened to the motorbike. Soon, there are too many sheep on a single little motorbike, and they have to “get organised” – children frequently commented on this scene and on why the sheep were especially funny.



Screenshots taken from *A Close Shave* (Aardman Ltd.) for academic purposes

### *What's so funny about it?*

“... the way they got onto it was really funny, because they all piled on top of each other.”

“It was like a circus, and circuses are funny and amazing.”

“Sheep wouldn't do that, that's why it's so unusual.”

“In real life they are so boring.” –

“Sheep are kind of innocent.”