

# Nan I Nen

*Nan I Nen* was produced by Ideapic for Televisión Nacional de Chile. Nan I Nen are two magical friends, small and made of cloth. They live in real spaces, such as gardens, sidewalks or walls. Both have the ability to build and create objects to overcome the difficulties they face. Through the adventures of these friends, we approach logical-mathematical relationships as in/out, up/down, far/near; more/less; continuous/discontinuous, and others. It is a good way to incorporate these concepts into our daily lives.

*Nan I Nen* was one of the PRIX JEUNESSE INTERNATIONALE 2010 finalists in the “up to 6 fiction” category.

## International experts’ opinions



Figure 1: Two friends decide to compete over who gets first to the destination.



Figure 2: One drives very fast to one direction and enjoys the speed.



Figure 3: The other drives slowly to another direction and enjoys the beautiful scenery.

The international experts were impressed with the technique used by the producers which was quite innovative and effective. “I was impressed – having done CG and live action environments – just how well they had done that integration and that the camera was moving and hand-held in a multitude of shots of watching that was impressive. I think that to me it worked better when it was on a live action environment. There was the one: the very end when they were on the pedestal or something; it didn’t have the same energy as it did when they were actually out there. I thought that in itself was – I was shocked, like literally moving around and going up to the trees and stuff, and keeping those characters composited was impressive” (male expert, Canada). Some, however, had different ideas. “I think while the technique took over, you were focusing so much on technique, making new things that it took away all the content in the program” (female expert, Denmark).

Many international experts were impressed with the design of the characters in the program. “I just have to say from a character design point of view, I thought that they were quirky; they were a lot of fun and accessible. I could just see it as a kid’s craft, and I could see myself pulling up into socks with old buttons and making these characters. I really enjoyed part of it. I thought that was very strong” (female expert, Canada). The male expert from Chile who was also the producer of the program explained that they use 3D animation to move the puppets. They also admired the spirit behind the characters. “I also liked the two characters very much. They look as if they were made by children – from the spirit when children only draw a head and then the feet to the head. In German we call it a *Kopffüssler*. I don’t know what the English word is” (female expert, Germany).

The producers of the program did not differentiate between the

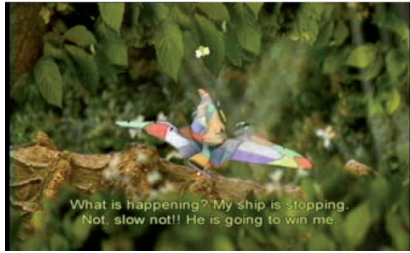


Figure 4: The one driving fast runs out of gas and his ship slows down.



Figure 5: The two friends finally get to the destination at the same time.



Figure 6: One blindfolds the other and asks him to break the pinata.

two characters in their looks but in their characters. “We didn’t want to make a big difference between them. But the difference is that one is more easy-going, and the other one is very hyperactive – wants to do everything fast. The other one is more chilled-out and enjoy – not everything is just going fast. The difference between them is more in the value of things, of doing stuff, and enjoying the play” (male expert, Chile).

The international experts loved the different speed of the characters. “I loved the story of quick and slow; fast and slow – I come from a country, which is very fast: Taiwan. The slow one I can appreciate, but the fast one: how can you enjoy when your speed is so high. I loved the story! Enjoy the speed or the scenery might be totally different – to show the diversity” (female expert, Taiwan). However some international experts found this concept of fast and slow confusing. “I felt the concepts – I think it was confusing, and I think that the concepts did not get across particularly well for young children. I think the concept of: one went to the right, one went to the left, and they were doing fast and slow: fast and slow are only fast and slow in respect to something else – a snail or a turtle is fast compared to a snail perhaps. But, we think of a turtle as being slow. I just don’t think that the concepts got across” (female expert, USA).



Figure 7: They quareled on how much candy from the pinata each should have.



Figure 8: They finally used the scales to divide the candy evenly between them.

Screenshots from Nan I Nen © Ideapic

Target Audience 6,7	Idea 6,4	Script 5,6	Realization 6,3
Average Score per Category by experts' voters at PRIX JEUNESSE INTERNATIONALE 2010			